

EWS . Ready Safe and Go

More output, less downtime.

The EWS Varia setup concept for turret machines.



www.ews-tools.de

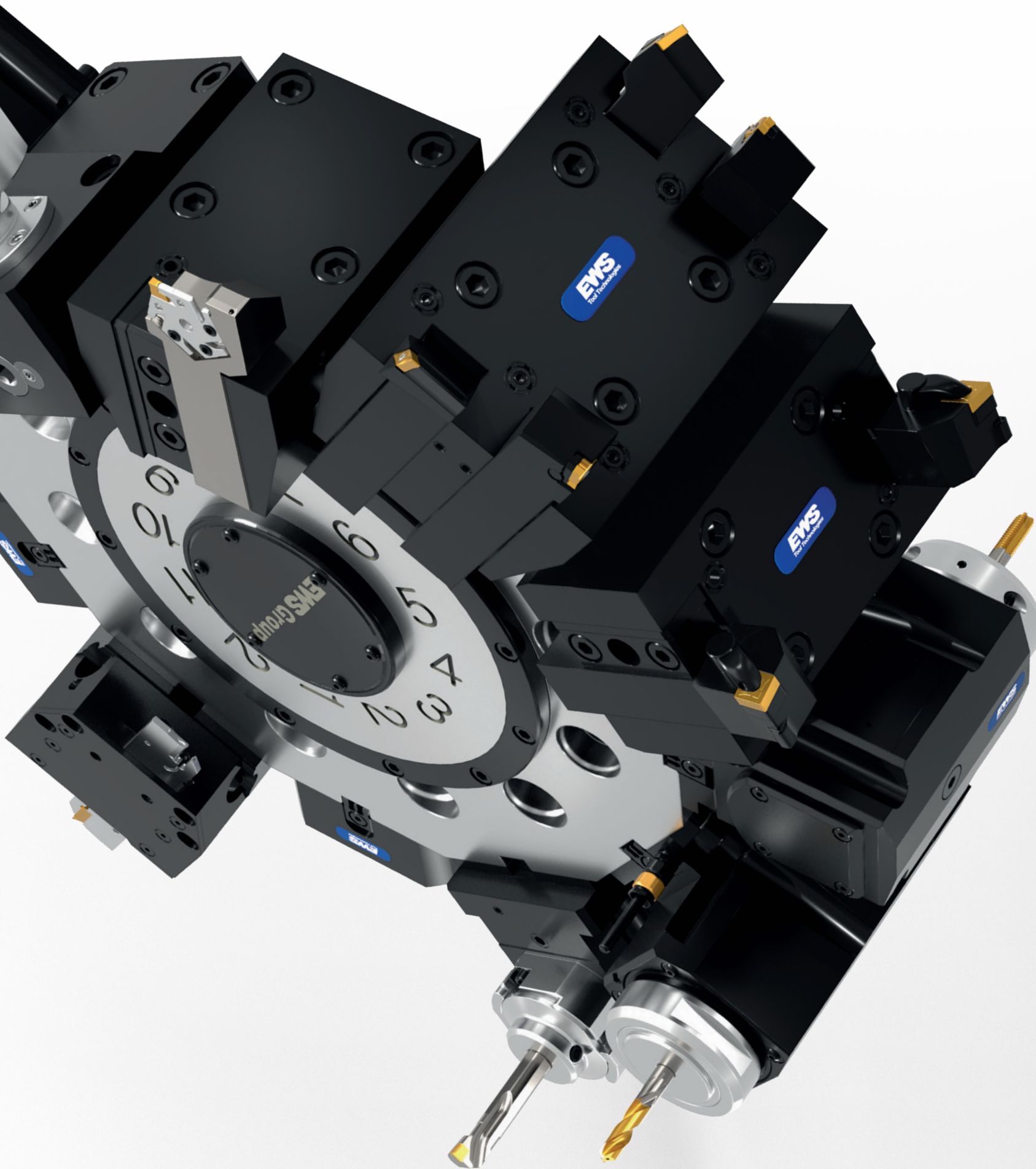
EWS
Tool Technologies

EWS . Ready Safe and Go

Take your setup processes to the next level:
faster, safer, more standardized – for maximum machine availability.

The result in practice:

- Significantly less setup time per station
- Less machine downtime per shift
- Higher productivity



Multiple mountings for permanent tools

External turning, cutting, and other operations remain securely clamped in double/quadruple holders: no retooling necessary.

The free flex slots are occupied by Varia clamping units. This turns your turret into an integrated tool magazine.

EWS . Ready Safe and Go

The setup concept for turret machines.

The starting point

- Setup processes cost valuable time
- Tools are changed directly in the work area
- **High risk of injury when loosening clamping nuts due to:** Rotational movement in the work area past cutting edges, or slipping when the nut is suddenly loosened.
- Incorrect handling damages tools and turrets
- High time requirements and a lack of standardization in setup lead to collisions or rejects
- Data break between CAD/CAM and machine



Machine and part range.

Pit stops win races

Setup times are show stoppers and block manpower and machines. Those who change over quickly and safely stay ahead.

The solution

✓ Ready

- Planning directly via the **EWS E-Shop**, including collision checking and turret position optimization
- Tool provision during non-productive time
- Standard turning tools remain on the turret
- Change tools mounted, measured, and labeled in the **EWS T-Carrier** or T-Shuttle

✓ Safe

- CAM program clearly assigns available tools
- Tool change in 20 seconds with safe one-hand operation
- Zero risk for people and machines

✓ Go

- Start machine
- Produce parts
- Increase performance and profits

EWS . Ready Safe and Go



Your competitive advantage

With **EWS Ready, Safe and Go** , every tool change becomes a predictable 20-second pit stop. Tailored to your machine and workpiece family

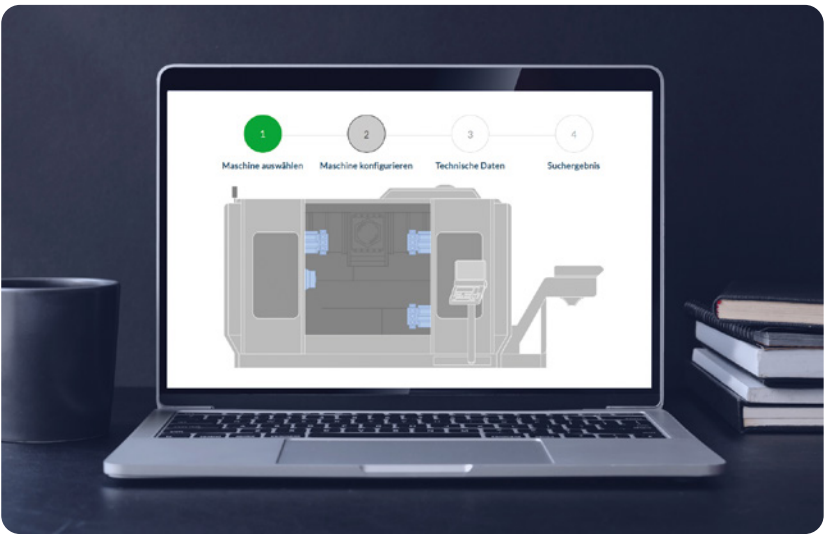
Make future-proof setup processes a series production success.

EWS . Ready Safe and Go

Plan, simulate, set up

From the machine to the perfect setup.

Use our **EWS** Tool Finder to create your setup layout in just a few clicks.



1. Select machine

Select machine from the **EWS** database :

- Access an existing database of machines.

Create new machine:

- Manual configuration of a machine by the user.

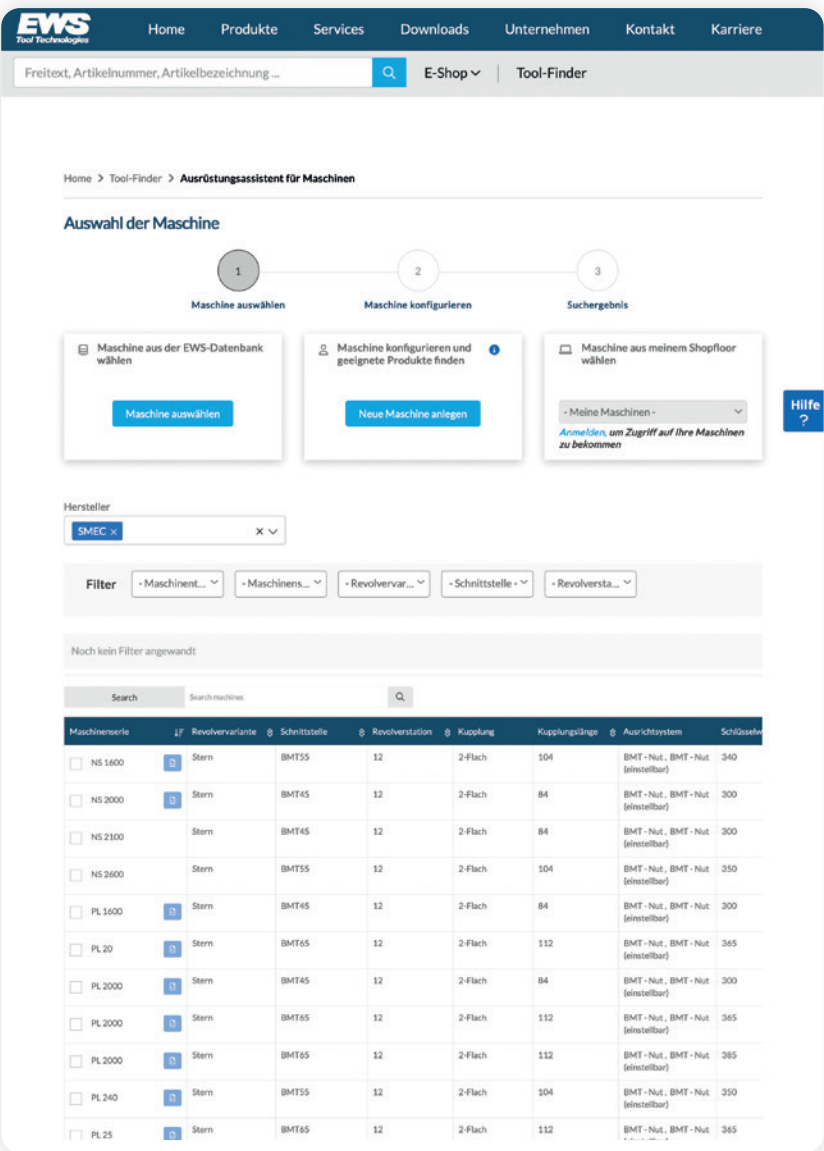
Select machine from my shop floor:

- Prerequisite: Login; access to user-specific machines.

2. Configure and simulate machine

3. Search result

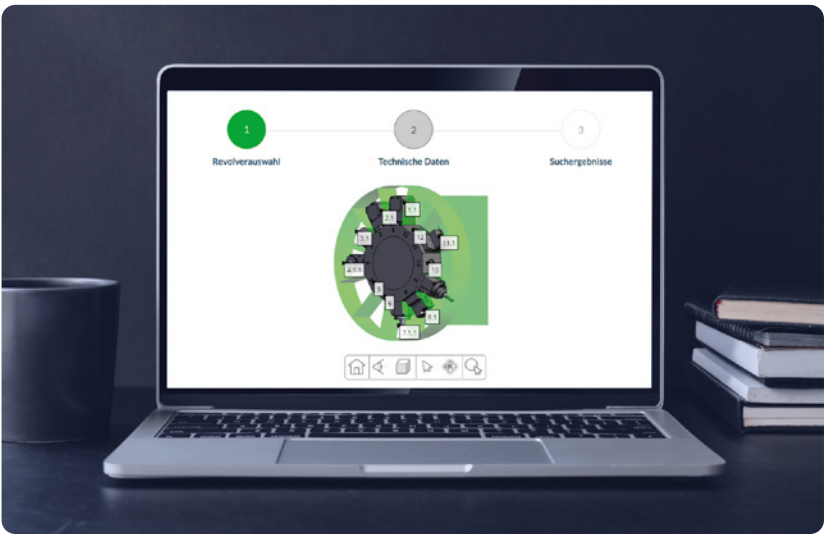
- Display of products tailored to your machine.



Setup processes at the highest level with our **EWS** online tools

You know your machine, but not the turret?

Our 3D turret assistant helps:



1. Turret selection

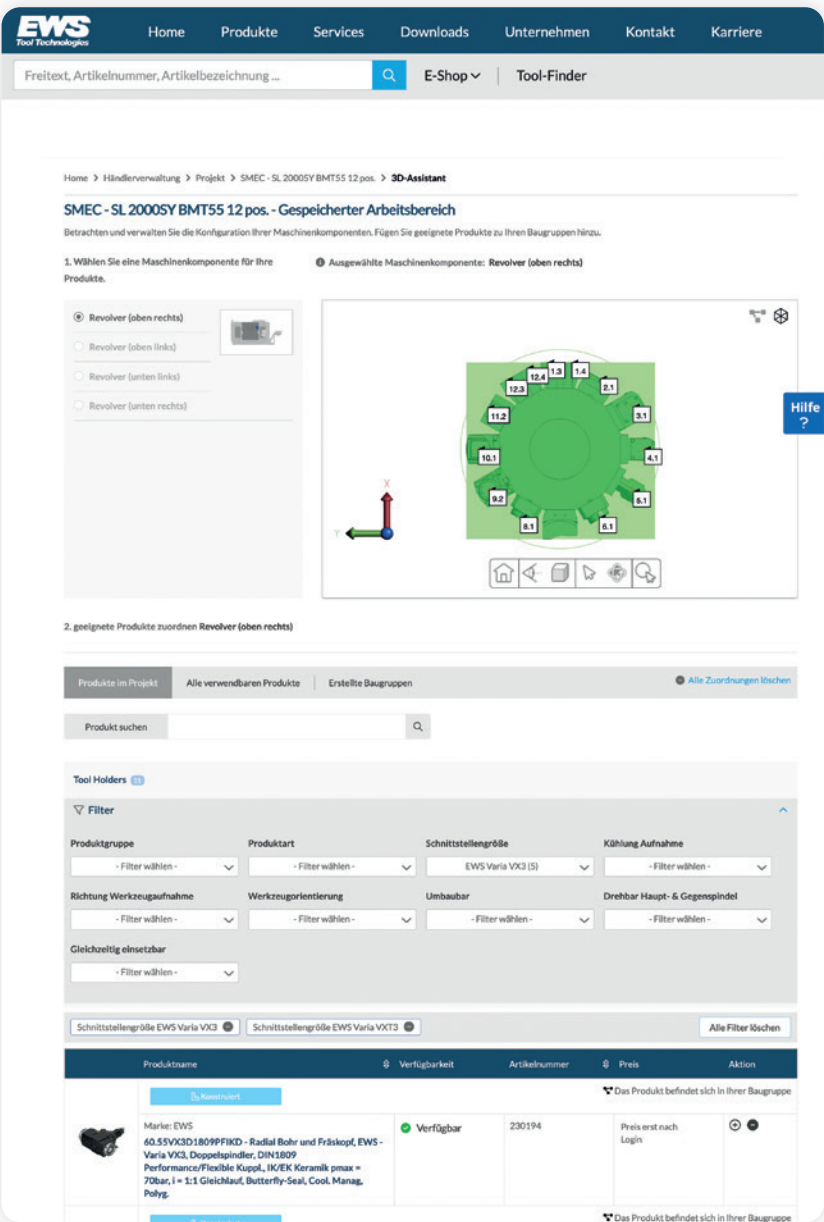
- Select the turret from a database based on manufacturer and properties.

2. Technical data

- Query or confirmation of technical details (e.g., interface, positions, etc.)

3. Search results

- Relevant products or compatible components based on selection and data



EWS .Ready Safe and Go

Efficiency in 5 clear steps

1 Plan, simulate, set up

With the **EWS Tool finder**, simulate the turret layout, check for collisions, and find the right **EWS.Varia** Equipment.



2 Mount

Various-Install inserts including cutting tools on the mounting block outside the machine.



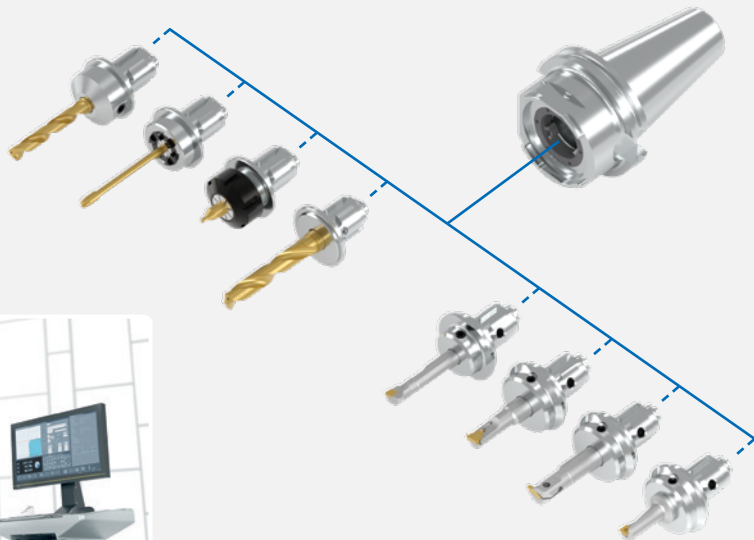
5 Quick change

20 Sec. **EWS .Varia**
240 Sec. Conventional tool change
91,7 % Time saved per change



3 Preset

Record lengths and radii externally with a presetter and **Varia adapter** and transfer them to the CNC program.



4 Organize and provide

Store inserts in the T-Carrier/T-Shuttle, attach tool tags, and label them according to **EWS** labeling logic



EWS Labeling logic with example

Material	Tool	Diameter	Tool carrier	Total length (L)	Tool length (AL)
HM	NCAB	D10.0	SHRL100	L165.0	AL65.0



EWS . Ready Safe and Go

This is what efficiency looks like in practice



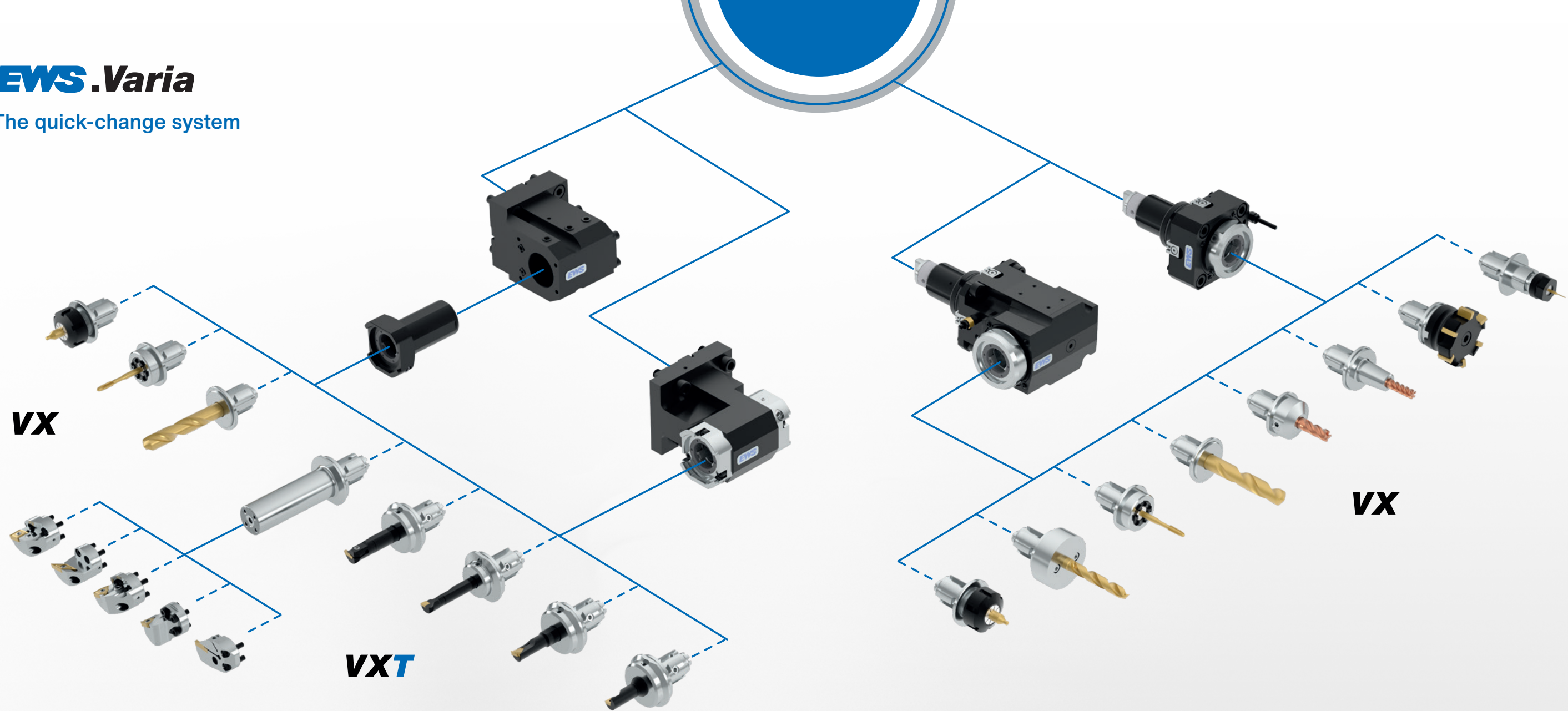
- 1. Planning, simulation, setup
- 2. Assemble
- 3. Presetting
- 4. Organize and deploy
- 5. Quick change

Want to see it live?
EMO Hanover 2025
Hall 04 | Booth F11

Make an appointment now:
Contact: info@ews-tools.de
Phone: +49 (0) 7161 / 930 40 10

Try out our 3D turret assistant and change a tool yourself – in just 20 seconds. Ready. Safe. Go.





In combination, **EWS.Varia VXT** and **EWS .Varia VX** cover the most frequently changing machining operations.

EWS .Varia VX

Centric drilling operations

- Thread drilling/forming/milling
- Core hole drilling
- Centering drilling
- Countersinking

EWS .Varia VXT

Internal turning

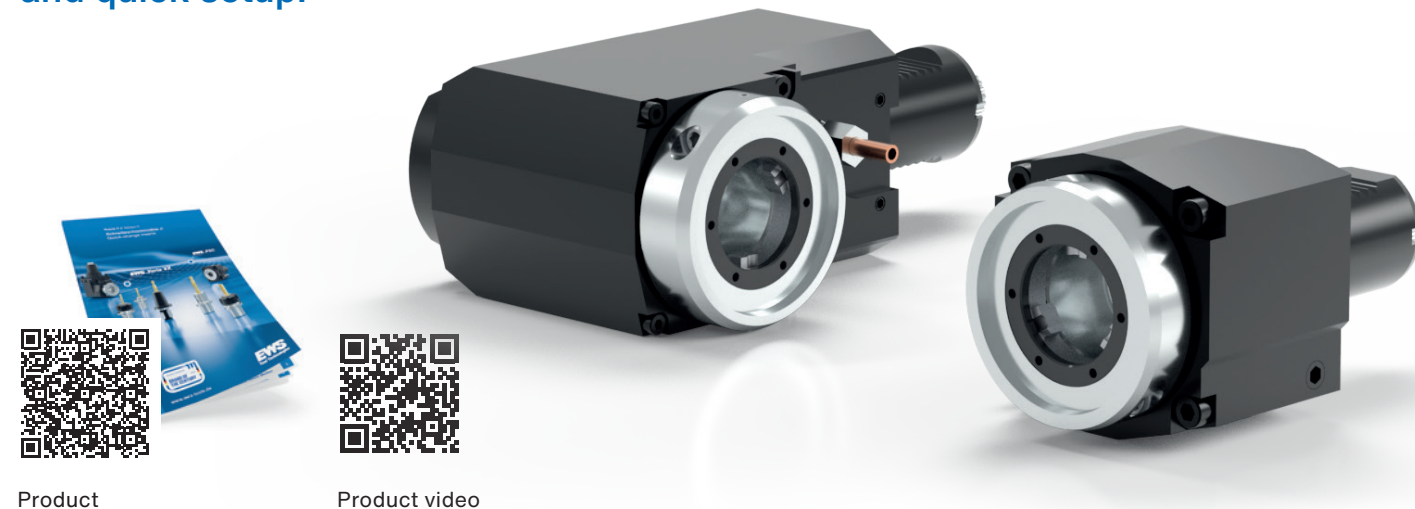
- Roughing
- Finishing
- Grooving
- Thread turning

Axial radial: Drilling/milling operations AGW

- Thread drilling/forming/milling
- Core hole drilling
- WSP rough milling
- NC drilling
- Solid carbide roughing/finishing milling
- Deburring milling

EWS.Varia

The interchangeable system for safe and quick setup!



The perfect start: EWS Varia Start Kits for maximum setup efficiency.

The EWS tool magazine for your turret.

With our **EWS Varia** starter kits and the **EWS Ready-Safe-Go** setup concept, you have the basis for a fully equipped magazine unit.

Preconfigured, safe, and ready for immediate use.

EWS Varia Start Kit + EWS Ready, Safe and Go.
= Your turnkey revolver tool magazine



VX3STARTKIT2 (No.: 216274)

Start Kit 2 "Professional"



- 1x T-Carrier TC-100 VX3-20 (No.: 216176)
- 4x ER25L30 collet insert (No.: 31.VX325L30)
- 1x Collet wrench ER25 (No.: 225)
- 1x Collet insert IM ER20L17 (No.: 31.VX320IML17)
- 1x Collet wrench for IM ER20 (No.: 220AX)
- 1x Adapter for combination holder 032 (No.: 19.32VXT3-ZYL)
- 5x Tool tags (No.: PT.VX3)
- 1x Torque wrench (No.: DSV SW5/05.7NM)
- 1x Mounting block (No.: MB-VX3)

VX4STARTKIT2 (No.: 216493)

Start Kit 2 "Professional"



EWS.Varia VX4

- 1x T-Carrier TC-100 VX4-20 (No.: 216178)
- 4x Collet insert ER32L30 (No.: 31.VX432L30)
- 1x Collet wrench ER32 (No.: 232)
- 1x Collet insert IM ER25L16 (No.: 31.VX425IML16)
- 1x Collet wrench for IM ER25 (No.: 225AX)
- 1x Adapter for combination holder 040 (No.: 19.40VXT4-ZY)
- 5x Tool tags (No.: PT.VX4)
- 1x Torque wrench (No.: DSV SW5/05.7NM)
- 1x Mounting block (No.: MB-VX4)

EWS Group

Tooling Systems and Turrets

EWS USA

EWS USA

13931 Sunfish Lake Blvd NW
Ramsey · MN 55303 USA
Telefon +1-763-576-6910
E-Mail support@ews-tools.com
www.ews-tools.com

EWS **Tool Technologies**

EWS Weigle GmbH & Co. KG

Maybachstraße 1 · D-73066 Uhingen
Telefon +49(0)7161-93040-100
E-Mail info@ews-tools.de
www.ews-tools.de

EWS Türkiye

EWS Tutucu Sistemleri ve Taretleri Anonim Şirket

Aydınlı mah. Melodi No.2/19 Sk. Bİlmo
San.Sit. 18-19 · 34956 Tuzla / İstanbul
Turkey
Telefon +90-216-593-22-44
E-Mail mehmet@ewstools.com
www.ews-tools.de

EWS China

EWS Tool Holder Technologies (Taicang Co. Ltd)

Beijing East Road No. 88
215400 Taicang · Jiangsu
P. R. China
Telefon +86-512-3306-2600
E-Mail sales.cn@ews-tools.de
www.ews-tools.cn

EWS Korea

EWS Korea Co. Ltd.

80-101 · Golden root-ro
Juchon-myeon · Gimhae-si
Gyeongsangnam-do · Korea
Telefon +82-55-267-8085
E-Mail info@ewskorea.co.kr
www.ewskorea.co.kr